

ATTACHMENT A

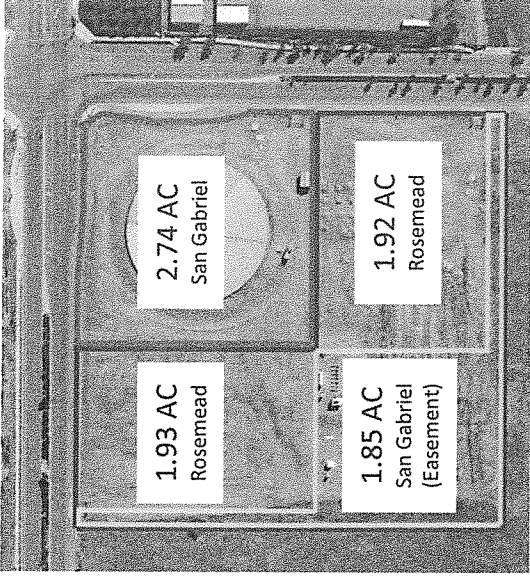
Plant F15

Proposed Lot Configurations

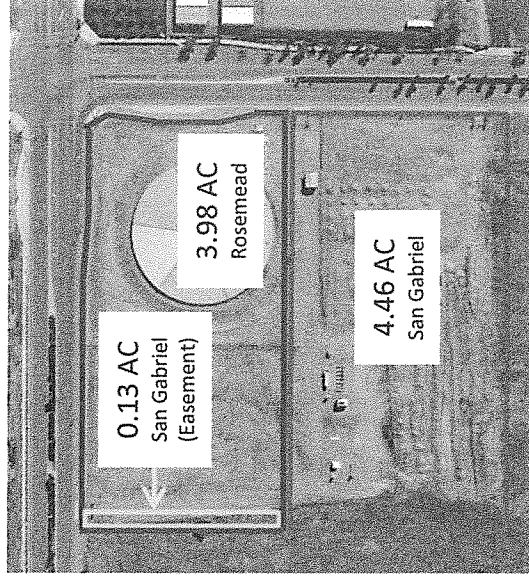
- Before land swap:
 - Before land swap Rosemead Properties owns a total of 5.70 acres, less 1.85 acres in easements to San Gabriel. Rosemead's net ownership of land is 3.85 acres.
 - San Gabriel owns 4.59 acres, including 2.74 acres of land and 1.85 acres in easements from Rosemead Properties.
- After land swap:
 - After land swap Rosemead Properties owns 3.98 acres, less a 0.13-acre easement to San Gabriel. Net ownership is 3.85 acres.
 - San Gabriel owns 4.59 acres, including 4.46 acres of land and a 0.13-acre easement from Rosemead Properties.

Legend:

- Rosemead Properties
- San Gabriel Valley Water Company (Land)
- San Gabriel Valley Water Company (Easement)



Before



After